

For Multi-Picture Tours Go To:
www.mitten-realty-services.com



7805 211b Street, Langley

\$679,800.00

**Fantastic 2473 Sq. Ft. End Unit Row House
Affordable Living In Style In Desirable Shaughnessy Mews**

Fantastic Rowhouse in desirable SHAUGHNESSY MEWS. Tudor inspired end unit. Spacious, functional and open floor plan. Gorgeous kitchen boasts quartz countertops, stainless appliances, gas range and glass tile backsplash. Three generous sized bedrooms upstairs including master with vaulted ceilings, walk-in closet, and attractive four piece ensuite with rain shower. Fully finished basement with a spacious recreation room with wet bar, full bath and fourth bedroom. This home includes a detached 28' long garage plus exterior paved parking pad for two extra cars. Located in the heart of Willoughby close to shopping, schools and entertainment. A wonderful opportunity for affordable living in style.

Doug or Bonnie Mitten



Prudential

Power Play
Realty

604-533-3231

All information contained in this brochure while thought to be reliable is not guaranteed to be accurate and should be verified by the purchaser.

Features Of This Fine Home...

Main Level: 815 Sq. Ft.

Great Room: 14'4 x 10'5 – Great room with gorgeous laminate floors and cozy electric fireplace will facilitate your entertaining and family fellowship.



Family Room/Dining Area: 18'10 x 11'7





Kitchen: 13'2 x 8' – Absolutely gorgeous kitchen with lots of cabinets with quartz counters, island with breakfast bar, stainless appliances, telephone desk and pantry in dining area.



2 Piece Powder Room

Upper Level: 797 Sq. Ft.

Master Bedroom: 14'4 x 13'2



3-Piece Ensuite Bathroom



Bedroom: 11'10 x 9'4



Bedroom: 11'6 x 9'4



4-Piece Main Bathroom



Laundry



Lower Level: 796 Sq. Ft.

Recreation Room: 23' x 18'4 – With wet bar.



Bedroom: 14'8 x 11'5



Bathroom: 4 Piece



FEATURES OF THIS FINE HOME:

- ✚ **Fantastic Rowhouse In Desirable SHAUGHNESSY MEWS.**
- ✚ **Tudor Inspired End Unit.**
- ✚ **Spacious, Functional And Open Floor Plan.**
- ✚ **Gorgeous Kitchen Boasts Quartz Countertops, Stainless Appliances, Gas Range And Glass Tile Backsplash.**
- ✚ **Three Generous Sized Bedrooms Upstairs Including Master With Vaulted Ceilings, Walk-In Closet, And Attractive Four Piece Ensuite With Rain Shower..**
- ✚ **Fully Finished Basement With A Spacious Recreation Room With Wet Bar, Full Bath And Fourth Bedroom.**
- ✚ **This Home Includes A Detached 28' Long Garage Plus Exterior Paved Parking Pad For Two Extra Cars.**
- ✚ **Located In The Heart Of Willoughby Close To Shopping, Schools And Entertainment. A Wonderful Opportunity For Affordable Living In Style.**

Doug or Bonnie Mitten



Prudential

Power Play
Realty

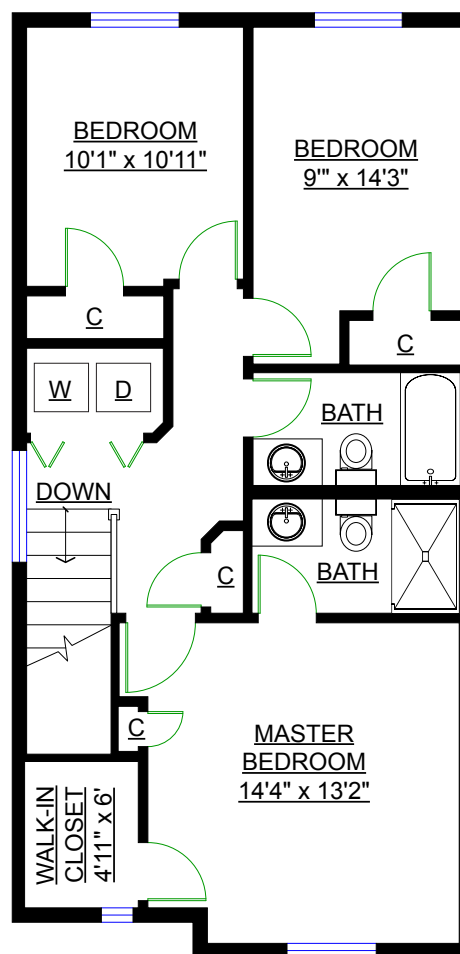
604-533-3231

All information contained in this brochure while thought to be reliable is not guaranteed to be accurate and should be verified by the purchaser.

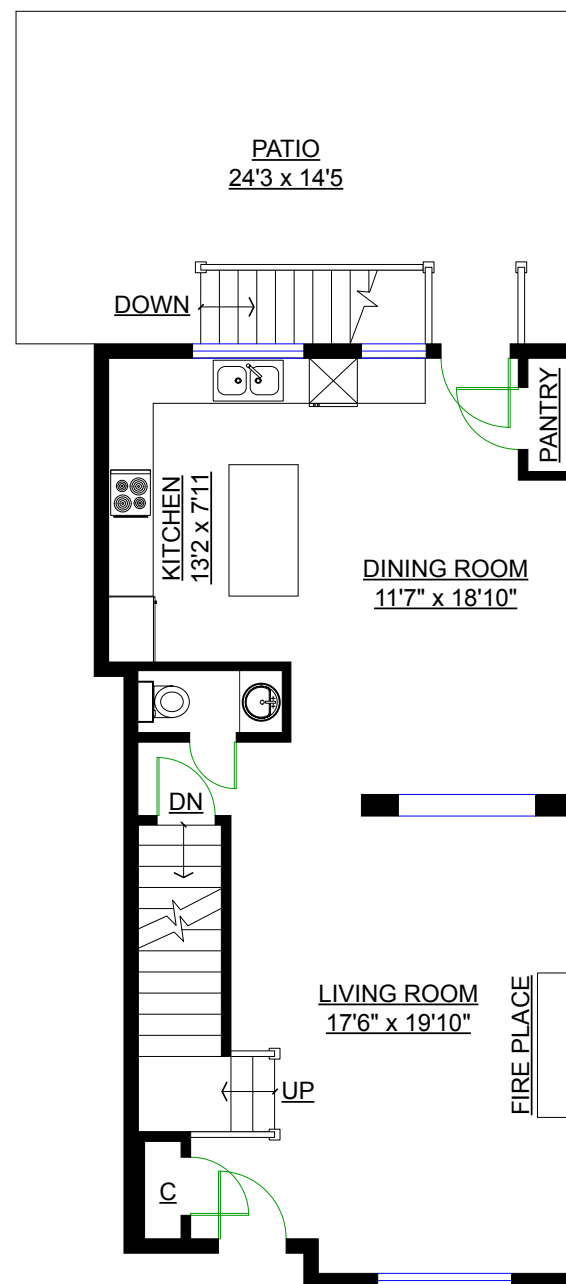
7805 211B Street, Langley, B.C.

Totals **

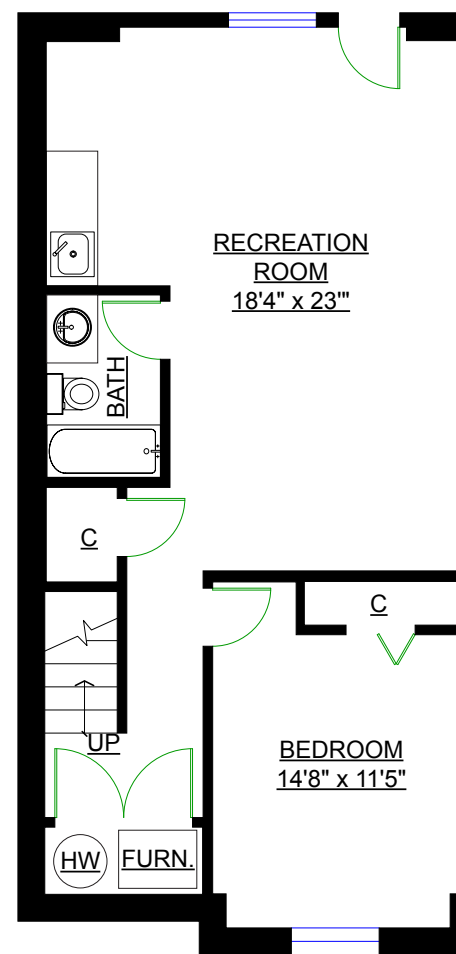
Main Level:	815 sq. ft.
Upper Level:	797 sq. ft.
Lower Level:	796 sq. ft.
Total:	2,408 sq. ft.



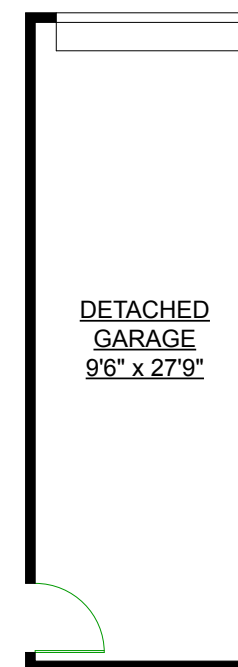
UPPER LEVEL



MAIN LEVEL

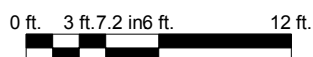


LOWER LEVEL



Other Areas

Patio:	350 sq. ft.
Detached Garage:	289 sq. ft.
Total:	639 sq. ft.



** Approx. based on interior measurements to exterior walls
** Total square footage not taken from original blueprints