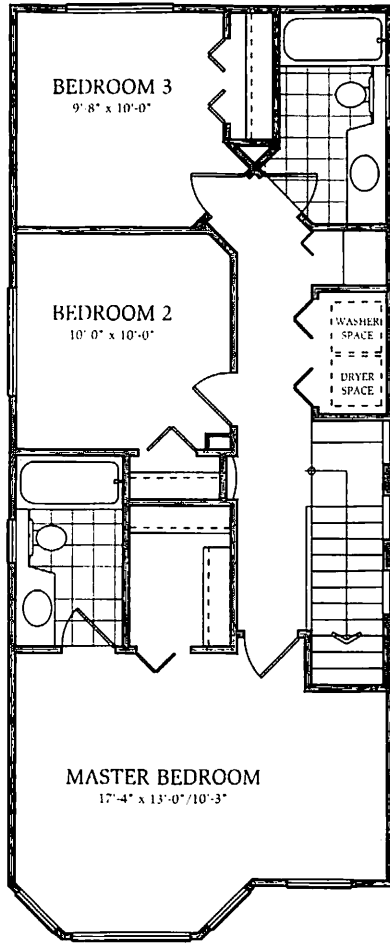
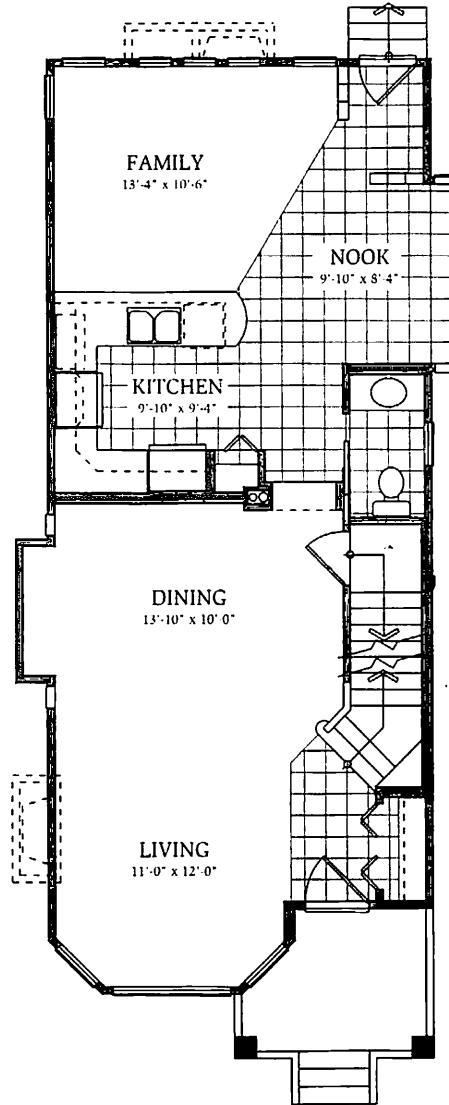


The BARKERVILLE I

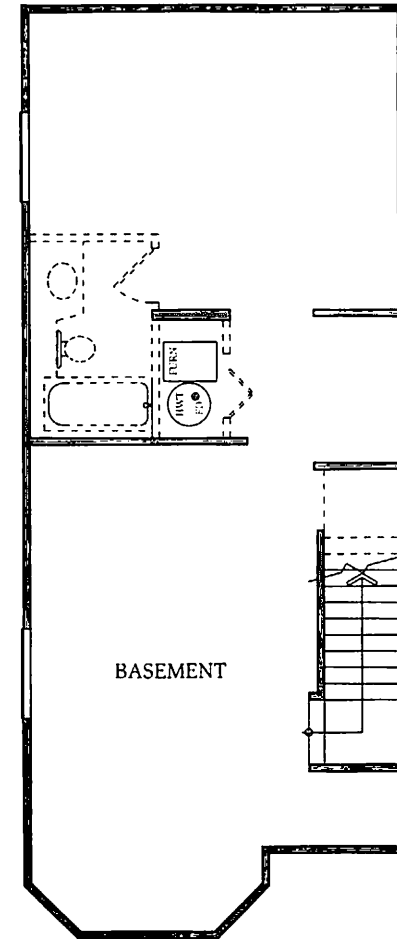
UPPER
720 sq. ft.



MAIN
775 sq. ft.



LOWER
751 sq. ft.



Every inch of space works to best advantage in this accommodating 3-bedroom family home. Offering a convenient "mud room" entrance into the family living area, this delightful home allows good separation between casual day-to-day living and elegant formal entertaining. The full-size upstairs laundry area is another bonus that Mom will appreciate.

PARKLANE
H O M E S

The BARKERVILLE



BARKERVILLE I
1495 sq. ft. plus 751 sq. ft. basement



BARKERVILLE II
1495 sq. ft. plus 751 sq. ft. basement



In a continuing effort to improve our product ParkLane Homes reserves the right to modify existing plans, specifications and prices without prior notice.