

For Multi-Picture Tours Go To:
www.mitten-realty-services.com



6013 Greenside Drive East, Surrey

\$465,000

TASTEFULLY UPDATED END-UNIT RANCHER TOWNHOME

Tastefully updated end unit rancher townhouse boasts many updated including updated flooring, lighting, paint, flooring, bathroom and kitchen. Entertainment sized living room with a vaulted ceiling, gas fireplace and door to spacious deck and attractive private rear yard with garden shed. Dining room. Updated kitchen with attractive maple cabinets. 2 spacious bedrooms and updated 4 piece bath. A must see for the discerning Buyer looking for attractive updated rancher. Siding, windows, exterior doors, soffits and roof were recently re-done. A fantastic affordable opportunity in a complex with outdoor pool, rec centre, exercise room and tennis courts. Conveniently located to sought after Elementary school. A must see..

Doug, Bonnie or David Mitten



Performance
Power Play Realty

604-533-3231

All information contained in this brochure while thought to be reliable is not guaranteed to be accurate and should be verified by the purchaser.

MAIN LEVEL: 933 SQUARE FEET

Entrance Hall: 7'10 x 3'8

Living Room: 16'2 x 13'1



Dining Room: 10' x 5'6



Kitchen: 12'2 x 10'1



Laundry Room: 12'1 x 6'10



Master Bedroom: 12'6 x 10'11



4-Piece Main Bathroom



Bedroom: 10'5 x 9'6



FEATURES OF THIS FINE HOME:

- ⌘ Tastefully updated end unit rancher townhouse boasts many updated including updated flooring, lighting, paint, flooring, bathroom and kitchen.
- ⌘ Entertainment sized living room with a vaulted ceiling, gas fireplace and door to spacious deck and attractive private rear yard with garden shed. Dining room.
- ⌘ A must see for the discerning Buyer looking for attractive updated rancher. Siding, windows, exterior doors, soffits and roof were recently re-done.
- ⌘ . A fantastic affordable opportunity in a complex with outdoor pool, rec centre, exercise room and tennis courts.
- ⌘ Conveniently located near to sought after Elementary school.
- ⌘ Strata Fees: \$301.00
- ⌘ Annual Taxes: \$ \$1,258.60

All information contained in this brochure while thought to be reliable is not guaranteed to be accurate and should be verified by the purchaser.

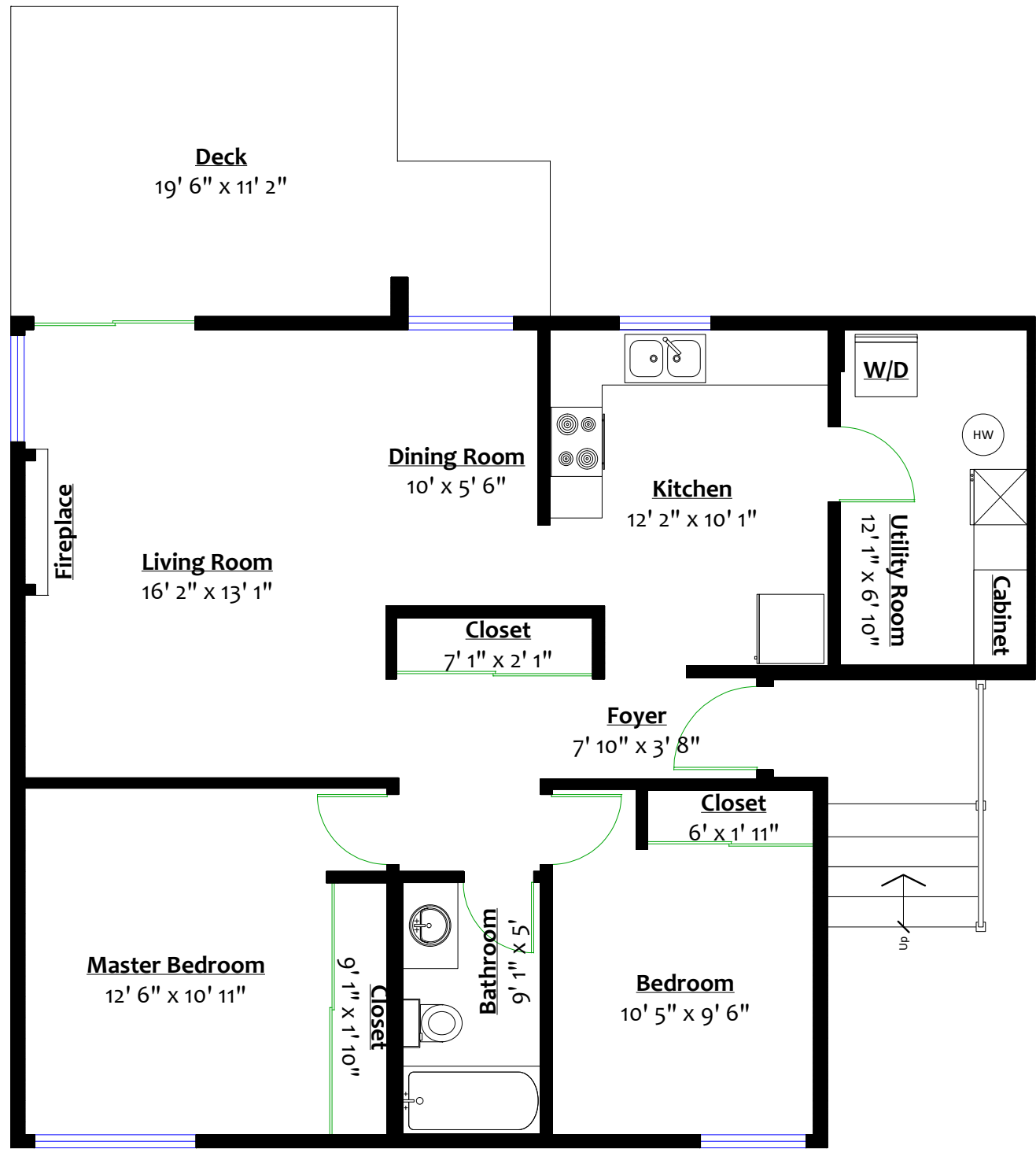


6013 Greenside Drive East, Surrey, B.C.

Totals**

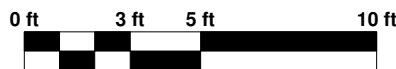
Main Level: 975 sq. ft.

Deck: 187 sq. ft.



MAIN LEVEL

Floor Area: 975 Sq. Ft.



** Approx. based on interior measurements to exterior walls
** Total square footage not taken from original blueprints